

PLEASE CHECK WWW.MOLEX.COM FOR LATEST PART INFORMATION

Part Number: [0442624506](#)
Status: **Active**
Description: 9.14mm (.360") Pitch Crimp Terminal, Power Contact, Tin (Sn), All Over Nickel (Ni), 14-16 AWG

Documents:

[Drawing \(PDF\)](#) [RoHS Certificate of Compliance \(PDF\)](#)

General

Product Family	Crimp Terminals
Series	44262
Crimp Quality Equipment	Yes
Product Name	N/A

Physical

Durability (mating cycles max)	500
Gender	Female
Material - Metal	High Performance Alloy (HPA)
Material - Plating Mating	Tin
Packaging Type	Reel
Termination Interface: Style	Crimp or Compression
Wire Insulation Diameter	1.52-3.30mm (.060-.130")
Wire Size AWG	14, 16
Wire Size mm ²	N/A

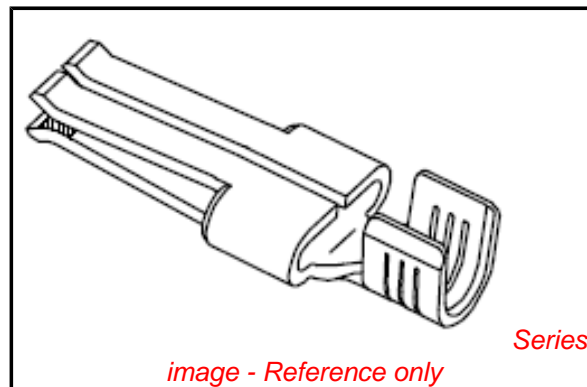
Electrical

Current - Maximum per Contact	20A
Voltage - Maximum	600V AC

Material Info

Reference - Drawing Numbers

Sales Drawing	SD-44262-100
---------------	--------------



EU RoHS

ELV and RoHS Compliant
REACH SVHC Contains SVHC: No
Halogen-Free Status
Not Reviewed

China RoHS



Need more information on product environmental compliance?

Email productcompliance@molex.com
 For a multiple part number RoHS Certificate of Compliance, [click here](#)

Please visit the [Contact Us](#) section for any non-product compliance questions.

Search Parts in this Series

[44262Series](#)

Use With

[638326100 Crimp Applicator](#)

Application Tooling | FAQ

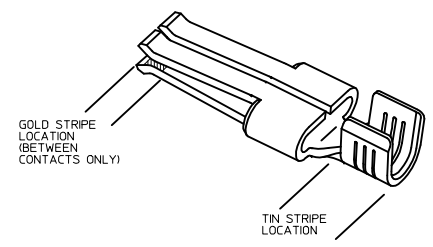
Tooling specifications and manuals are found by selecting the products below. Crimp Height Specifications are then contained in the Application Tooling Specification document.

Global

Description	Product #
Hand Crimp Tool for 14-18 AWG Male and Female Power Contact Terminals	0638195500
Mini-Mac™ Applicator	0638326100

PLEASE CHECK WWW.MOLEX.COM FOR LATEST PART INFORMATION

PART NUMBER	PLATING	RECOMMENDED WIRE SIZE	DIM 'A' HEIGHT	DIM 'B' WIDTH	DIM 'C' GAP	DIM 'D' TIPS	RECOMMENDED CRIMP APPLICATOR	MATING CONTACT	PACKAGE SIZE
44262-4304	80-160μ * TIN OVER 50μ * NICKEL OVERALL	8 AWG (2) 12 AWG	7.42±0.5 .292±.020	5.84±0.5 .230±.020					1800 PARTS/ REEL
44262-4334	30μ * GOLD STRIPE OVER 50μ * NICKEL OVERALL WITH 80-130μ * SELECT TIN						63832-6300		
44262-4302	80-160μ * TIN OVER 50μ * NICKEL OVERALL	10-12 AWG (2) 14 AWG	5.97±0.5 .235±.020	5.33±0.5 .210±.020	0.10/.004	2.54/.100 REF		44262-6*** SEE MOLEX DRAWING SD-44262-026 OR WITH BLADES 0.64/.025 THICK X 6.10/.240 MN WIDE	2500 PARTS/ REEL
44262-4332	30μ * GOLD STRIPE OVER 50μ * NICKEL OVERALL WITH 80-130μ * SELECT TIN						63832-6000		
44262-4306	80-160μ * TIN OVER 50μ * NICKEL OVERALL	14-16 AWG (2) 16 AWG	5.20±0.5 .205±.020	5.33±0.5 .210±.020					
44262-4336	30μ * GOLD STRIPE OVER 50μ * NICKEL OVERALL WITH 80-130μ * SELECT TIN	(2) 18 AWG					63832-6100		
44262-4404	80-160μ * TIN OVER 50μ * NICKEL OVERALL	8 AWG (2) 12 AWG	7.42±0.5 .292±.020	5.84±0.5 .230±.020					1800 PARTS/ REEL
44262-4434	30μ * GOLD STRIPE OVER 50μ * NICKEL OVERALL WITH 80-130μ * SELECT TIN						63832-6300		
44262-4402	80-160μ * TIN OVER 50μ * NICKEL OVERALL	10-12 AWG (2) 14 AWG	5.97±0.5 .235±.020	5.33±0.5 .210±.020	0.64/.025	3.07/.121 REF		FOR USE WITH BLADES 1.27/.050 THICK X 6.10/.240 MN WIDE	2500 PARTS/ REEL
44262-4432	30μ * GOLD STRIPE OVER 50μ * NICKEL OVERALL WITH 80-130μ * SELECT TIN						63832-6000		
44262-4406	80-160μ * TIN OVER 50μ * NICKEL OVERALL	14-16 AWG (2) 16 AWG	5.20±0.5 .205±.020	5.33±0.5 .210±.020					
44262-4436	30μ * GOLD STRIPE OVER 50μ * NICKEL OVERALL WITH 80-130μ * SELECT TIN	(2) 18 AWG					63832-6100		
44262-4504	80-160μ * TIN OVER 50μ * NICKEL OVERALL	8 AWG (2) 12 AWG	7.42±0.5 .292±.020	5.84±0.5 .230±.020					1800 PARTS/ REEL
44262-4534	30μ * GOLD STRIPE OVER 50μ * NICKEL OVERALL WITH 80-130μ * SELECT TIN						63832-6300		
44262-4502	80-160μ * TIN OVER 50μ * NICKEL OVERALL	10-12 AWG (2) 14 AWG	5.97±0.5 .235±.020	5.33±0.5 .210±.020	0.30/.012	2.74/.108 REF		FOR USE WITH BLADES 0.81/.032 THICK X 6.10/.240 MN WIDE RECOMMENDED FOR 6 CIRCUITS AND ABOVE	2500 PARTS/ REEL
44262-4532	30μ * GOLD STRIPE OVER 50μ * NICKEL OVERALL WITH 80-130μ * SELECT TIN						63832-6000		
44262-4506	80-160μ * TIN OVER 50μ * NICKEL OVERALL	14-16 AWG (2) 16 AWG	5.20±0.5 .205±.020	5.33±0.5 .210±.020					
44262-4536	30μ * GOLD STRIPE OVER 50μ * NICKEL OVERALL WITH 80-130μ * SELECT TIN	(2) 18 AWG					63832-6100		
44262-4604	80-160μ * TIN OVER 50μ * NICKEL OVERALL	8 AWG (2) 12 AWG	7.42±0.5 .292±.020	5.84±0.5 .230±.020					1800 PARTS/ REEL
44262-4634	30μ * GOLD STRIPE OVER 50μ * NICKEL OVERALL WITH 80-130μ * SELECT TIN						63832-6300		
44262-4602	80-160μ * TIN OVER 50μ * NICKEL OVERALL	10-12 AWG (2) 14 AWG	5.97±0.5 .235±.020	5.33±0.5 .210±.020	0.89/.035	3.33/.131 REF		FOR USE WITH BLADES 1.27/.050 THICK X 6.10/.240 MN WIDE RECOMMENDED FOR 6 CIRCUITS AND ABOVE	2500 PARTS/ REEL
44262-4632	30μ * GOLD STRIPE OVER 50μ * NICKEL OVERALL WITH 80-130μ * SELECT TIN						63832-6000		
44262-4606	80-160μ * TIN OVER 50μ * NICKEL OVERALL	14-16 AWG (2) 16 AWG	5.20±0.5 .205±.020	5.33±0.5 .210±.020					
44262-4636	30μ * GOLD STRIPE OVER 50μ * NICKEL OVERALL WITH 80-130μ * SELECT TIN	(2) 18 AWG					63832-6100		



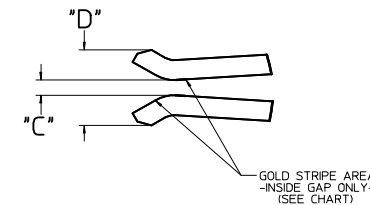
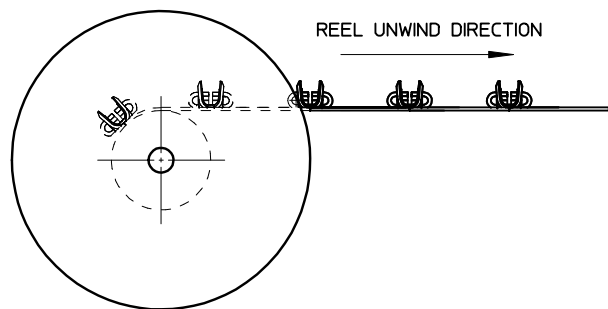
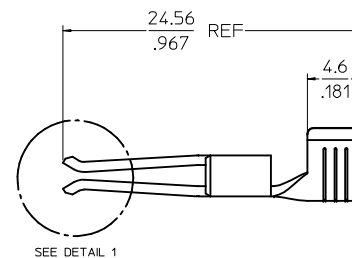
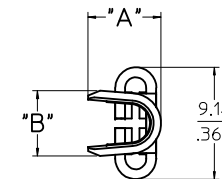
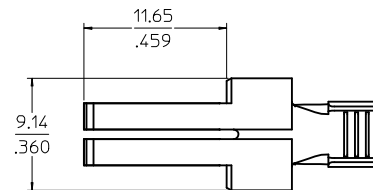
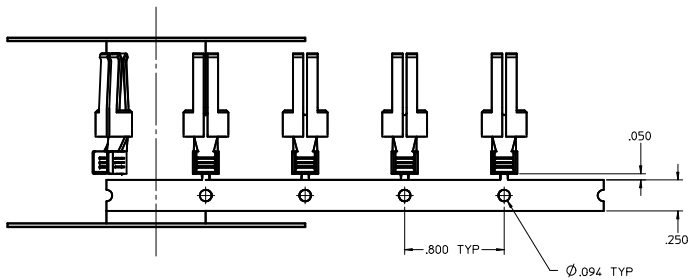
- NOTES:
1. MATERIAL: COPPER ALLOY .032 IN THICK
 2. FINISH: PER MOLEX PLATING SPECIFICATION ES-88 - SEE CHART
 3. FOR CRIMP APPLICATOR SEE CHART
 4. FOR CRIMP TOOLING CONTACT MOLEX OR VISIT THE MOLEX WEBSITE AT: WWW.MOLEX.COM
 5. STANDARD PACKAGE SIZE: SEE CHART
 6. SEE PRODUCT SPECIFICATION: PS-44262-001 FOR MORE INFORMATION
 7. PARTS ARE RoHS COMPLIANT
 8. FOR MATING CONTACT: SEE CHART
 9. FOR CRIMP SET UP INFORMATION SEE MOLEX APPLICATION SPECIFICATION DOCUMENT:
8 AWG - ATS-638326300
10/12 AWG - ATS-638326000
14/16 AWG - ATS-638326100

REV DESCRIPTIONS IN CHART DEC NO: UCP2009-1020 2008/11/04 DWN:MDATA 2008/11/04 CHKD: APPR:APATEL 2008/11/04 REV	QUALITY SYMBOLS	GENERAL TOLERANCES (UNLESS SPECIFIED)	DIMENSION STYLE	SCALE	DESIGN UNITS	THIRD ANGLE PROJECTION
	▽=0	4 PLACES ±.005 ±.005	MM/IN	1:1	INCH	☉
	▽=0	3 PLACES ±.010 ±.010				
	▽=0	2 PLACES ±.025 ±.010				
		1 PLACE ±.025 ±.005				
		ANGULAR ±1/2°				
		DRAFT WHERE APPLICABLE MUST REMAIN WITHIN DIMENSIONS				

DRAWN BY	DATE	TITLE
BKOSTIC	2006/11/13	TERMINAL - RECEPTACLE POWER CONTACT
CHECKED BY	DATE	
BKOSTIC	2006/11/13	
APPROVED BY	DATE	
APATEL	2006/11/14	
MATERIAL NO.	DOCUMENT NO.	
SEE CHART	SD-44262-100	
SIZE		SHEET NO.
D		1 OF 2

THIS DRAWING CONTAINS INFORMATION THAT IS PROPRIETARY TO MOLEX INCORPORATED AND SHOULD NOT BE USED WITHOUT WRITTEN PERMISSION

20 19 18 17 16 15 14 13 12 11 10 9 8 7 6 5 4 3 2 1



DETAIL 1
SCALE 10:1

SEE SHEET 1 IEC NO: UCP2009-1020 DRAWN DATA 2008/11/04 CHYKD: 2008/11/04 APPR: APATEL 2008/11/04 REV DESCRIPTION	QUALITY SYMBOLS ▽=0 ▽=0 ▽=0		GENERAL TOLERANCES (UNLESS SPECIFIED) <table border="1"> <thead> <tr> <th></th> <th>mm</th> <th>INCH</th> </tr> </thead> <tbody> <tr> <td>4 PLACES</td> <td>± .15</td> <td>± .005</td> </tr> <tr> <td>3 PLACES</td> <td>± .10</td> <td>± .004</td> </tr> <tr> <td>2 PLACES</td> <td>± 0.25</td> <td>± .010</td> </tr> <tr> <td>1 PLACE</td> <td>± 0.25</td> <td>± .010</td> </tr> <tr> <td colspan="3">ANGULAR ±1/2°</td> </tr> </tbody> </table>			mm	INCH	4 PLACES	± .15	± .005	3 PLACES	± .10	± .004	2 PLACES	± 0.25	± .010	1 PLACE	± 0.25	± .010	ANGULAR ±1/2°			DIMENSION STYLE MM/IN DRAWN BY BKOSTIC DATE 2006/11/13 CHECKED BY BKOSTIC DATE 2006/11/13 APPROVED BY APATEL DATE 2006/11/14		SCALE 5:1 DESIGN UNITS INCH THIRD ANGLE PROJECTION	
		mm	INCH																							
	4 PLACES	± .15	± .005																							
	3 PLACES	± .10	± .004																							
2 PLACES	± 0.25	± .010																								
1 PLACE	± 0.25	± .010																								
ANGULAR ±1/2°																										
DRAFT WHERE APPLICABLE MUST REMAIN WITHIN DIMENSIONS			MATERIAL NO. SEE CHART SIZE D		TITLE TERMINAL - RECEPTACLE POWER CONTACT																					
			MOLEX INCORPORATED		SHEET NO. 2 OF 2																					
			DOCUMENT NO. SD-44262-100		THIS DRAWING CONTAINS INFORMATION THAT IS PROPRIETARY TO MOLEX INCORPORATED AND SHOULD NOT BE USED WITHOUT WRITTEN PERMISSION																					

19 18 17 16 15 14 13 12 11 10 9 8 7 6 5 4 3 2 1